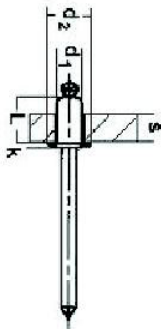


Remache DIN7337

Aplicación

Remaches ciegos de vástago a rotura, cuerpo abierto y cabeza alomada

Open end blind rivets with break pull mandrel and protruding head.



Remache Aluminio cabeza alomada DIN7337.

Código	D Ø (mm)	L (mm)	d 2 (mm)	S (mm)	d 1 (mm)	unds caja	unds cartón
R2406	2,4x 6	6	5	2,0-4,0	2,4	1.000	8.000
R2408	2,4x 8	8	5	4,0-6,0	2,4	1.000	8.000
R2409	2,4x 9	9	5	6,0-7,0	2,4	1.000	8.000
R2412	2,4x 12	12	5	8,0-10,0	2,4	1.000	8.000
R0306	3,0x 6	6	6,5	1,0-3,5	3,0	1.000	8.000
R0307	3,0x 7	7	6,5	3,5-4,5	3,0	1.000	8.000
R0308	3,0x 8	8	6,5	4,5-5,5	3,0	1.000	8.000
R0309	3,0x 9	9	6,5	5,5-6,5	3,0	1.000	8.000
R0310	3,0x 10	10	6,5	6,5-7,0	3,0	1.000	8.000
R0312	3,0x 12	12	6,5	7,0-9,0	3,0	1.000	8.000
R0314	3,0x 14	14	6,5	9,0-11	3,0	1.000	8.000
R0316	3,0x 16	16	6,5	11-13	3,0	1.000	8.000
R0318	3,0x 18	18	6,5	13-15	3,0	1.000	8.000
R0320	3,0x 20	20	6,5	15-17	3,0	1.000	8.000
R0406	4,0x 6	6	8,1	1,5-3,0	4,0	1.000	8.000
R0407	4,0x 7	7	8,1	3,0-4,0	4,0	1.000	8.000
R0408	4,0x 8	8	8,1	4,0-5,0	4,0	1.000	8.000
R0409	4,0x 9	9	8,1	5,0-6,0	4,0	1.000	8.000
R0410	4,0x 10	10	8,1	6,0-7,0	4,0	1.000	8.000
R0411	4,0x 11	11	8,1	5,5-7,0	4,0	1.000	8.000
R0412	4,0x 12	12	8,1	7,0-8,5	4,0	1.000	8.000
R0414	4,0x 14	14	8,1	9,0-11	4,0	1.000	8.000
R0416	4,0x 16	16	8,1	8,5-11,5	4,0	1.000	8.000
R0418	4,0x 18	18	8,1	10-14	4,0	1.000	8.000
R0420	4,0x 20	20	8,1	12,5-16,5	4,0	1.000	8.000
R0425	4,0x 25	25	8,1	16,5-21,5	4,0	1.000	8.000
R0430	4,0x 30	30	8,1	21,26	4,0	1.000	8.000
R0508	5,0x 8	8	9,5	1,5-3,0	5	1.000	8.000
R0510	5,0x 10	10	9,5	4,0-6,0	5	1.000	8.000
R0512	5,0x 12	12	9,5	6,0-8,0	5	1.000	8.000
R0514	5,0x 14	14	9,5	8,0-10,0	5	1.000	8.000
R0516	5,0x 16	16	9,5	10,0-13,0	5	1.000	8.000-
R0518	5,0x 18	18	9,5	12,0-15,0	5	1.000	8.000
R0520	5,0x 20	20	9,5	12,0-15,0	5	1.000	8.000
R0525	5,0x 25	25	9,5	16,0-19,0	5	1.000	8.000
R0527	5,0x 27	27	9,5	18,0-21,0	5	1.000	8.000
R0300	5,0x 30	30	9,5	21,0-25,2	5	1.000	8.000
R0535	5,0x 35	35	9,5	25,0-30,0	5	1.000	8.000
R0540	5,0x 40	40	9,5	30,0-36,0	5	1.000	8.000
R0612	6,0x 12	12	12	4,5-7,0	6	1.000	8.000
R0616	6,0x 16	16	12	6,5-10,0	6	1.000	8.000
R0620	6,0x 20	20	12	11,0-14,0	6	1.000	8.000
R0626	6,0x 26	26	12	16,5-21,0	6	1.000	8.000
R0630	6,0x 30	30	12	20,5-25,0	6	1.000	8.000

GARANTÍA FESIT



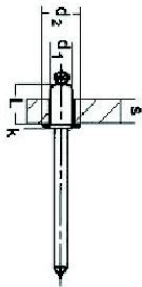
Norma

UNE-EN ISO 15977:2003





Remache acero inoxidable A-2 cabeza alomada DIN7337.



Código	D Ø (mm)	L (mm)	d 2 (mm)	S (mm)	d 1 (mm)	unds caja	unds cartón
RI0306	3,0x 6	6	6,5	1,0-3,5	3,0	1.000	8.000
RI0308	3,0x 8	8	6,5	4,5-5,5	3,0	1.000	8.000
RI0310	3,0x 10	10	6,5	6,5-7,0	3,0	1.000	8.000
RI0312	3,0x 12	12	6,5	7,0-9,0	3,0	1.000	8.000
RI0314	3,0x 14	14	6,5	9,0-11	3,0	1.000	8.000
RI0406	4,0x 6	6	8,1	1,5-3,0	4,0	1.000	8.000
RI0407	4,0x 7	7	8,1	3,0-4,0	4,0	1.000	8.000
RI0408	4,0x 8	8	8,1	4,0-5,0	4,0	1.000	8.000
RI0410	4,0x 10	10	8,1	6,0-7,0	4,0	1.000	8.000
RI0412	4,0x 12	12	8,1	7,0-8,5	4,0	1.000	8.000
RI0414	4,0x 14	14	8,1	9,0-11	4,0	1.000	8.000
RI0416	4,0x 16	16	8,1	8,5-11,5	4,0	1.000	8.000
RI0420	4,0x 20	20	8,1	12,5-16,5	4,0	1.000	8.000
RI0425	4,0x 25	25	8,1	16,5-21,5	4,0	1.000	8.000
RI0508	5,0x 8	8	9,5	1,5-3,0	5	1.000	8.000
RI0510	5,0x 10	10	9,5	4,0-6,0	5	1.000	8.000
RI0512	5,0x 12	12	9,5	6,0-8,0	5	1.000	8.000
RI0514	5,0x 14	14	9,5	8,0-10,0	5	1.000	8.000
RI0516	5,0x 16	16	9,5	10,0-13,0	5	1.000	8.000-
RI0518	5,0x 18	18	9,5	12,0-15,0	5	1.000	8.000
RI0520	5,0x 20	20	9,5	12,0-15,0	5	1.000	8.000
RI0525	5,0x 25	25	9,5	16,0-19,0	5	1.000	8.000
RI0527	5,0x 27	27	9,5	18,0-21,0	5	1.000	8.000
RI0300	5,0x 30	30	9,5	21,0-25,2	5	1.000	8.000
RI0535	5,0x 35	35	9,5	25,0-30,0	5	1.000	8.000
RI0540	5,0x 40	40	9,5	30,0-36,0	5	1.000	8.000
RI0612	6,0x 12	12	12	4,5-7,0	6	1.000	8.000
RI0616	6,0x 16	16	12	6,5-10,0	6	1.000	8.000
RI0620	6,0x 20	20	12	11,0-14,0	6	1.000	8.000
RI0626	6,0x 26	26	12	16,5-21,0	6	1.000	8.000
RI0630	6,0x 30	30	12	20,5-25,0	6	1.000	8.000



Remache DIN7337

Aplicación

Remaches ciegos de vástago a rotura, cuerpo abierto y cabeza alomada.

Acero inoxidable A-2



Open end blind rivets with break pull mandrel and protruding head.

Stainless steel A-2

GARANTÍA FESIT



Norma

UNE-EN ISO 15977:2003



Fesit[®]
FIJACIONES ESPECIALES

Remache DIN7337

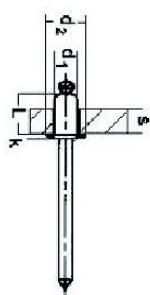
Aplicación

Remaches ciegos de vástago a rotura, cuerpo abierto y cabeza alomada.

Cobre

Open end blind rivets with break pull mandrel and protruding head.

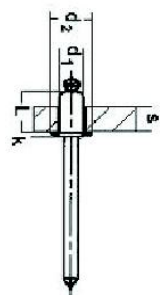
Copper



Remache Cobre cabeza alomada DIN7337.



Código	D Ø (mm)	L (mm)	d 2 (mm)	S (mm)	d 1 (mm)	unds caja	unds cartón
RC306	3,0x 6	6	6,5	1,0-3,5	3,0	1.000	8.000
RC307	3,0x 7	8	6,5	3,5-4,5	3,0	1.000	8.000
RC309	3,0x 9	10	6,5	5,5-6,5	3,0	1.000	8.000
RC312	3,0x 12	12	6,5	7,0-9,0	3,0	1.000	8.000
RC406	4,0x 6	6	8,1	1,5-3,0	4,0	1.000	8.000
RC407	4,0x 7	7	8,1	3,0-4,0	4,0	1.000	8.000
RC410	4,0x 9	10	8,1	6,0-7,0	4,0	1.000	8.000
RC411	4,0x 11	12	8,1	7,0-8,5	4,0	1.000	8.000
RC412	4,0x 12	14	8,1	9,0-11	4,0	1.000	8.000
RC416	4,0x 16	16	8,1	8,5-11,5	4,0	1.000	8.000
RC420	4,0x 20	20	8,1	12,5-16,5	4,0	1.000	8.000
RC508	5,0x 8	8	9,5	1,5-3,0	5	1.000	8.000
RC510	5,0x 10	10	9,5	4,0-6,0	5	1.000	8.000
RC512	5,0x 12	12	9,5	6,0-8,0	5	1.000	8.000
RC514	5,0x 14	14	9,5	8,0-10,0	5	1.000	8.000
RC516	5,0x 16	16	9,5	10,0-13,0	5	1.000	8.000-
RC518	5,0x 18	18	9,5	12,0-15,0	5	1.000	8.000
RC520	5,0x 20	20	9,5	12,0-15,0	5	1.000	8.000



Remache estanco.



Código	LxØ (mm)	d 2 (mm)	S (mm)	d 1 (mm)	unds caja	unds cartón
RE410	4x 10	7,8	2,3-4,2	4,00	1.000	8.000
RE413	4x 13	7,8	4,8-7,2	4,80	1.000	8.000
RE501	5x 9,5	12	1,1-3,7	4,80	1.000	8.000
RE502	5x 12,5	12	5,3-6,7	4,80	1.000	8.000
RA503	5x 15,5	12	8,8-9,7	4,80	1.000	8.000
RA504	5x 18	12	9,8-12,2	4,80	1.000	8.000
RA505	5x 20	12	11,0-14,2	4,80	1.000	8.000

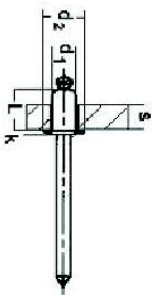
GARANTÍA FESIT



Norma

UNE-EN ISO 15977:2003





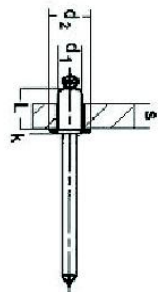
Remache de ala ancha.



Código	LxØ (mm)	d 2 (mm)	S (mm)	d 1 (mm)	unds caja	unds cartón
RA508	5x 8	12	2,5-4,0	4,80	1.000	8.000
RA510	5x 10	12	4,5-6,0	4,80	1.000	8.000
RA512	5x 12	12	6,0-8,0	4,80	1.000	8.000
RA514	5x 14	12	8,0-10,0	4,80	1.000	8.000
RA516	5x 16	12	10,0-13,0	4,80	1.000	8.000
RA518	5x 18	12	12,0-15,0	4,80	1.000	8.000
RA519	5x 19	12	12,0-16,0	4,80	1.000	8.000
RA521	5x 21	12	14,0-16,0	4,80	1.000	8.000
RA525	5x 25	12	16,0-19,0	4,80	1.000	8.000
RA527	5x 27	12	18,0-21,0	4,80	1.000	8.000
RA530	5x 30	12	20,0-26,0	4,80	1.000	8.000
RA535	5x 35	12	25,0-28,0	4,80	1.000	8.000
RA540	5x 40	12	27,0-32,0	4,80	1.000	8.000



Remache flor.



Código	LxØ (mm)	d 2 (mm)	S (mm)	d 1 (mm)	unds caja	unds cartón
RF412	4x 12	7,8	2,5-6,0	4,00	1.000	8.000
RF416	4x 16	7,8	5,5-10,0	4,00	1.000	8.000
RF420	4x 20	9,4	9,5-14,0	4,00	1.000	8.000
RF516	5x 16	9,4	4,5-10,0	4,80	1.000	8.000
RF520	5x 20	9,4	9,5-14,0	4,80	1.000	8.000
RF524	5x 24	9,4	13,5-18,0	4,80	1.000	8.000
RF530	5x 30	9,4	17,5-22,0	4,80	1.000	8.000
RF535	5x 35	9,4	21,5-27,0	4,80	1.000	8.000
RF540	5x 40	9,4	26,5-32,0	4,80	1.000	8.000

Remache ala ancha Remache flor.

Aplicación

Remaches estanco

Aluminio

GARANTÍA FESIT



Norma

UNE-EN ISO 15977:2003



Fesit[®]
FIJACIONES ESPECIALES

Remache DIN7337

Aplicación

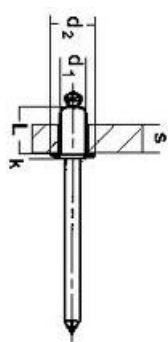
Remaches ciegos de vástago a rotura, cuerpo abierto y cabeza alomada.

Puede ser suministrado lacado en cualquier color de la carta RAL.

Mejora el acabado estético de la pieza a fijar, y añade mayor valor de protección a la corrosión.



Remache Aluminio cabeza alomada DIN7337 Lacados.



Código	Ø (mm)	L (mm)	d 2 (mm)	S (mm)	d 1 (mm)	unds caja	unds cartón
R2406	2,4x 6	6	5	2,0-4,0	2,4	1.000	8.000
R2408	2,4x 8	8	5	4,0-6,0	2,4	1.000	8.000
R2409	2,4x 9	9	5	6,0-7,0	2,4	1.000	8.000
R2412	2,4x 12	12	5	8,0-10,0	2,4	1.000	8.000
R0306	3,0x 6	6	6,5	1,0-3,5	3,0	1.000	8.000
R0307	3,0x 7	7	6,5	3,5-4,5	3,0	1.000	8.000
R0308	3,0x 8	8	6,5	4,5-5,5	3,0	1.000	8.000
R0309	3,0x 9	9	6,5	5,5-6,5	3,0	1.000	8.000
R0310	3,0x 10	10	6,5	6,5-7,0	3,0	1.000	8.000
R0312	3,0x 12	12	6,5	7,0-9,0	3,0	1.000	8.000
R0314	3,0x 14	14	6,5	9,0-11	3,0	1.000	8.000
R0316	3,0x 16	16	6,5	11-13	3,0	1.000	8.000
R0318	3,0x 18	18	6,5	13-15	3,0	1.000	8.000
R0320	3,0x 20	20	6,5	15-17	3,0	1.000	8.000
R0406	4,0x 6	6	8,1	1,5-3,0	4,0	1.000	8.000
R0407	4,0x 7	7	8,1	3,0-4,0	4,0	1.000	8.000
R0408	4,0x 8	8	8,1	4,0-5,0	4,0	1.000	8.000
R0409	4,0x 9	9	8,1	5,0-6,0	4,0	1.000	8.000
R0410	4,0x 10	10	8,1	6,0-7,0	4,0	1.000	8.000
R0411	4,0x 11	11	8,1	5,5-7,0	4,0	1.000	8.000
R0412	4,0x 12	12	8,1	7,0-8,5	4,0	1.000	8.000
R0414	4,0x 14	14	8,1	9,0-11	4,0	1.000	8.000
R0416	4,0x 16	16	8,1	8,5-11,5	4,0	1.000	8.000
R0418	4,0x 18	18	8,1	10-14	4,0	1.000	8.000
R0420	4,0x 20	20	8,1	12,5-16,5	4,0	1.000	8.000
R0425	4,0x 25	25	8,1	16,5-21,5	4,0	1.000	8.000
R0430	4,0x 30	30	8,1	21,26	4,0	1.000	8.000
R0508	5,0x 8	8	9,5	1,5-3,0	5	1.000	8.000
R0510	5,0x 10	10	9,5	4,0-6,0	5	1.000	8.000
R0512	5,0x 12	12	9,5	6,0-8,0	5	1.000	8.000
R0514	5,0x 14	14	9,5	8,0-10,0	5	1.000	8.000
R0516	5,0x 16	16	9,5	10,0-13,0	5	1.000	8.000-
R0518	5,0x 18	18	9,5	12,0-15,0	5	1.000	8.000
R0520	5,0x 20	20	9,5	12,0-15,0	5	1.000	8.000
R0525	5,0x 25	25	9,5	16,0-19,0	5	1.000	8.000
R0527	5,0x 27	27	9,5	18,0-21,0	5	1.000	8.000
R0300	5,0x 30	30	9,5	21,0-25,2	5	1.000	8.000
R0535	5,0x 35	35	9,5	25,0-30,0	5	1.000	8.000
R0540	5,0x 40	40	9,5	30,0-36,0	5	1.000	8.000
R0612	6,0x 12	12	12	4,5-7,0	6	1.000	8.000
R0616	6,0x 16	16	12	6,5-10,0	6	1.000	8.000
R0620	6,0x 20	20	12	11,0-14,0	6	1.000	8.000
R0626	6,0x 26	26	12	16,5-21,0	6	1.000	8.000
R0630	6,0x 30	30	12	20,5-25,0	6	1.000	8.000



HEAD



KOLOR



Open end blind rivets with break pull mandrel and protruding head.

GARANTÍA FESIT



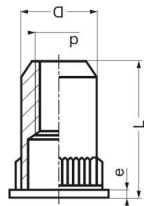
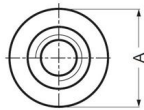
Norma

UNE-EN ISO 15977:2003





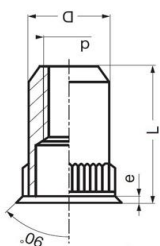
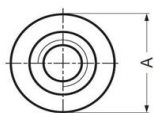
Tuerca remachable de ala ancha.



Código	Medida (mm)	d (mm)	A (mm)	Espe- sor a fijar (mm)	e (mm)	unds caja	unds cartón
TRAM4	M-4	5,9	9,0	0,5-3,5	1,0	1.000	8.000
TRAM5	M-5	6,9	10,0	0,5-3,5	1,0	1.000	8.000
TRAM6	M-6	8,9	12,0	1,0-4,0	1,5	1.000	8.000
TRAM8	M-8	10,9	15,0	1,0-4,0	1,50	1.000	8.000
TRAM9	M-10	12,9	19,0	1,0-5,0	1,7	1.000	8.000



Tuerca remachable de cabeza reducida.



Código	Medida (mm)	Ø taladro (mm)	d (mm)	A (mm)	Espe- sor a fijar (mm)	e (mm)	unds caja	unds cartón
TRCM4	M-4	6,0	5,9	7,0	0,5-3,5	1,0	1.000	8.000
TRCM5	M-5	7,0	6,9	8,0	0,5-3,5	1,0	1.000	8.000
TRCM6	M-6	9,0	8,9	10,0	1,0-4,0	1,5	1.000	8.000
TRCM8	M-8	11,0	10,9	12,0	1,0-4,0	1,50	1.000	8.000
TRCM9	M-10	13,0	12,9	16,0	1,0-5,0	1,7	1.000	8.000



Tuerca remachable

Aplicación

Tuerca remachable .

Material: Acero al carbono

GARANTÍA FESIT

